

Indoor presence and movement sensor designed to be used with a wireless transmitter

BATTERY-POWERED INDOOR DETECTOR

RXC-R series

PASSIVE INFRARED DETECTOR
RXC-RST

PIR/MICROWAVE COMBINATION DETECTOR
RXC-RDT-X5 : 10.525GHz



Intrusion detection



Lighting control



Air-conditioning control



Nursing-care



FEATURES

- 12x12m battery-powered indoor PIR and dual tech sensor
- Spacious back box to accommodate third party wireless transmitters
- Intelligent digital micro-processor (Core platform)
- Analysis of frequencies for best reliability
- Pet tolerance
- Long life battery up to five years with a single CR123A
- Dual tech model available for harsher environments
- Built-in back tamper



Temperature



Sunlight



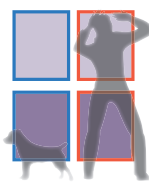
Air conditioner



Curtain

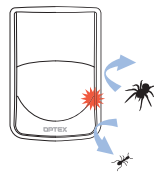
False alarm immunity

OPTeX's digital CORE platform



Digital quad logic

Pet tolerance



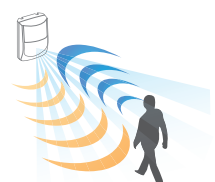
Sealed optics

To prevent potential
ingression



Silent output

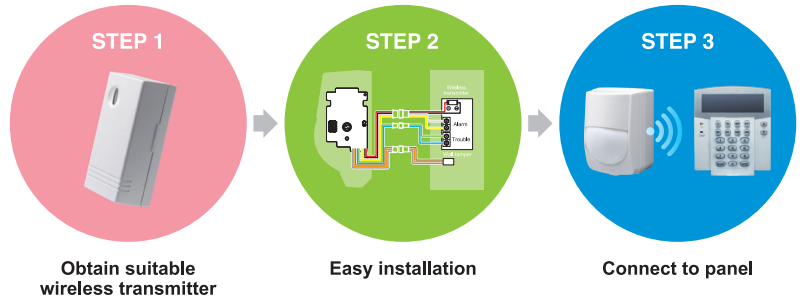
Guarantee a good
night's rest



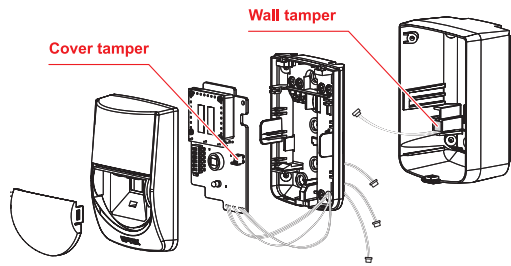
Reliable tough MW module

Perfect combination of PIR
and microwave technology
to confirm alarm (RXC-RDT)

Can accommodate most wireless transmitters available on the market

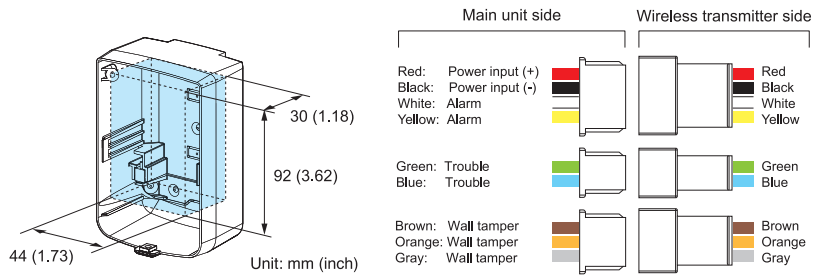


Wall / cover tamper function

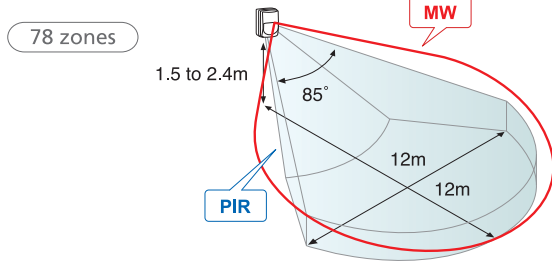


Wall and cover tamper output activates when either cover or back box is removed.

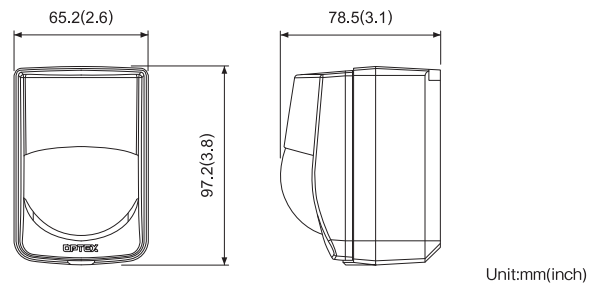
Spacious back box (wireless transmitter storage space)



Detection area



Dimensions



Specifications

Model	RXC-RST	RXC-RDT
Detection method	Passive Infrared	Passive Infrared and Microwave
Coverage	12 m x 12 m (40 ft x 40 ft) 85°wide	
Detection zones	78 zones	
Mounting height	1.5 to 2.4 m (5 to 8 ft)	
LED alarm indicator	Switchable ON/OFF	
Alarm period	Approx. 2.5 sec	
Alarm output	0.01 A max. (Operating voltage)	
Trouble output	0.01 A max. (Operating voltage)	
Sensitivity/range	Switchable LOW/MID/HI/SuperHI	
MW sensitivity/range	Switchable LONG/SHORT	
Warm up period	Approx. 60 sec. (LED blinks.)	
Power input	3 to 3.6 V	
Current draw	6 μA (In Stand by), 3 mA (In Walktest,LED on)	14 μA (In Stand by), 3 mA (In Walktest,LED on)
Dimensions	97.2 mm x 65.2 mm x 78.5 mm <HxWxD>	
Weight	Approx.145 g	Approx.160 g
Operating temperature	-10°C to +50°C (-14°F to +122°F)	-10°C to +45°C (+14°F to +113°F)
Environment humidity	95% max.	
RF interference	No alarm 10V/m	

* Specifications and design are subject to change without prior notice.

Options

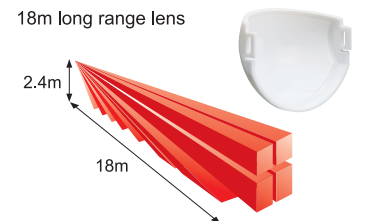
FA-3

Mounting bracket



FL-60N (RXC-RST only)

18m long range lens



OPTEX CO., LTD. (JAPAN)

URL: <http://www.optex.net>

OPTEX INC. (U.S.)

URL: <http://www.optexamerica.com>

OPTEX DO BRASIL LTDA. (Brazil)

URL: <http://www.optex.net/br/es/sec>

OPTEX (EUROPE) LTD. / EMEA HQ (U.K.)

URL: <http://www.optex-europe.com>

OPTEX TECHNOLOGIES B.V. (The Netherlands)

URL: <http://www.optex.eu>

OPTEX SECURITY SAS (France)

URL: <http://www.optex-security.com>

OPTEX SECURITY Sp.z o.o. (Poland)

URL: <http://www.optex.com.pl>

OPTEX PINNACLE INDIA, PVT., LTD. (India)

URL: <http://www.optex.net/in/en/sec>

OPTEX KOREA CO.,LTD. (Korea)

URL: <http://www.optexkorea.com>

OPTEX (DONGGUAN) CO.,LTD. SHANGHAI OFFICE (China)

URL: <http://www.optexchina.com>

OPTEX (Thailand) CO., LTD. (Thailand)

URL: <http://www.optex.net/th/th>