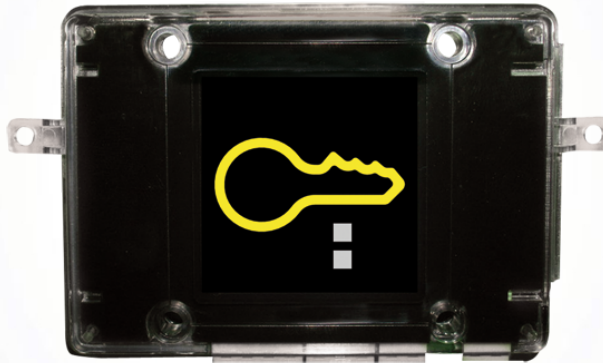




SK90001

SIMPLEKEY BASIC READER IKALL



Unit complete with SimpleKey Basic access control device Independent control unit module + integrated Mifare(R) reader. Airtight PVC case. Capacity: 1500 keys. Programming via single master card. The system is activated when the first card is passed in front of the unit which has not yet been used. It is converted into a master card, to which others may be added. Relay closure can be adjusted by a timer: between 1 and 60 seconds, default 5 seconds. To delete a key, use the SK9093 software. Power supply unit 12-24 V AC/DC and 33V DC.



SK9000I

SIMPLEKEY BASIC READER IKALL

GENERAL DATA

Height (mm):	62
Width (mm):	88
Depth (mm):	23

COMPATIBILITY

Simplebus 2 audio/video system:	Yes
Simplebus 2 audio system:	Yes
Vip system:	Yes
Home Automation system:	Yes



SK9000I

SIMPLEKEY BASIC READER IKALL

ACCESSORIES



SK9093

SIMPLEKEY BASIC - SOFTWARE + SERIAL CABLE

Supplied with a cable for connection to SK9000 and a software CD-ROM - Not required for programming. SK9093 it is only necessary to individually delete fobs, by entering its serial n°

SK9015

Simplekey adapter with power supply unit 1210

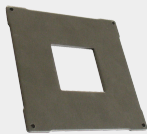
Simplekey adapter for the connection of readers art. SK9000I and SK9001I on external units with power supply unit art. 1210.



3179S

MODULE FOR SIMPLEKEY READER, VANDALCOM SERIES

Module made using double 2.5 mm 316 stainless steel plate, with facility for housing SimpleKey units SK9000I-SK9001I-SK9030I. Dimensions: 106x106x9 mm



3349

SIMPLEKEY MODULE WITH BLACK FACEPLATE

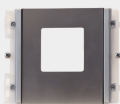
Module set up for use with Simplekey reader Art. SK9000I, SK9001I and SK9030I. Dimensions 112x89,5x22 mm.



3349M

IKALL METAL SIMPLEKEY CUT-OUT

Module set up for use with Simplekey reader Art. SK9000I. Stainless steel finish. Dimensions 112x89,5x22 mm



3349W/A

SIMPLEKEY MODULE WITH WHITE FACEPLATE

Module set up for use with Simplekey reader Art. SK9000I, SK9001I and SK9030I. Dimensions 112x89,5x22 mm.

