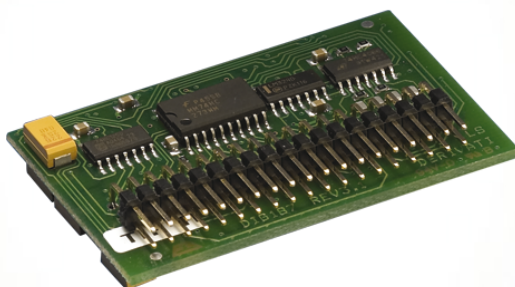




2907

CARD FOR ADDITIONAL BRANCHES



Board to be installed inside the switchboard Art 2906 to obtain 4 additional extensions (max. 1 board per switchboard) All switchboard functions remain unchanged.



2907

CARD FOR ADDITIONAL BRANCHES

MAIN FEATURES

Product height (mm):	36
Product width (mm):	57
Operating temperature (°C):	0 ÷ 30

COMPATIBILITY

Simplebus Top audio/video system:	Yes
Comelbus system:	Yes

AUDIO/VIDEO FEATURES

Audio system:	Yes
Audio/video system:	Yes