



8461X

QUADRA + MAXI SINGLE-FAMILY KIT, SIMPLEBUS SYSTEM



SB2

Simplebus 2 2-wires kit comprised of: - no. 1 Quadra series wall-mounted external unit art. 4893M - no. 1 Maxi series hands-free colour monitor art. 6801W - no. 1 power supply unit art. 1209 - no. 1 flush-mounted box art. 6817 - no. 1 wall bracket art. 6820 - no. 1 line closure terminal art. 1216

AWARDS

DESIGN
MILANO



DESIGN PLUS
powered by building



8461X

QUADRA + MAXI SINGLE-FAMILY KIT, SIMPLEBUS SYSTEM

KIT PRODUCT



4893M

QUADRA ENTRANCE PANEL W/ BUTTONS. 2 WIRES

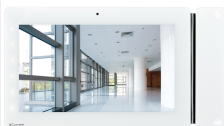
Quadra series wall-mounted external video entry unit with mechanical buttons. Die-cast aluminium faceplate, wide-angle colour camera and a single LED for nighttime lighting. Indicator LED for call sent, lock-release activated, audio activated and system busy. Adjustment of speaker volume and audio balance. Power supply from bus line. External unit dimensions: 95x195x28 mm.

MAIN FEATURES - 4893M

Type:	Monoblock
Type of finish:	Die-cast aluminum
Audio/video system:	Yes
Wall-mounted:	Yes
Type of sensor:	1/4" CMOS
Lens size (mm):	2,1
Diagonal viewing angle (°):	100
Minimum colour lighting (lux):	0,1
Horizontal resolution (TVL):	550
Signal/noise ratio (dB):	48
Maximum current absorption (mA):	250
Clamps:	LL RTE COM DO SE- SE+C NC NO
Buttons to call:	Yes
Total buttons:	4
Microphone volume control:	Yes
Loudspeaker volume control:	Yes
Operating temperature (°C):	-25 ÷ 55
RH operating humidity (%):	25 ÷ 75
IP protection rating (IP code):	IP54
Vandal Resistant rating (IK code):	IK08
Backlighting colour:	White

6801W

7-INCH MAXI MONITOR, S2



Colour monitor for flush-mounting (on Art. 6817) or wall-mounting (on support Art. 6820) with 7" 16/9 screen, hands-free full-duplex audio and touch sensitive controls. Allows brightness, contrast and audio volume control, plus adjustment of the volume of the ringtone, which can be customised with a choice of different melodies. Equipped as standard with control buttons for lock-release and audio enable/disable with relative indicator LEDs, plus 6 further buttons for self-ignition, privacy service and other programmable functions. Manages floor door calls and call repeat as standard. Complete with 2 x 8-position DIP-switches for user code programming and button programming. Equipped with riser distribution terminal Art 1214/2C. The monitor can only be used in 2-wire Simplebus2 systems. Dimensions: 223x124x25mm.



8461X

QUADRA + MAXI SINGLE-FAMILY KIT, SIMPLEBUS SYSTEM

GENERAL DATA - 6801W

Product height (mm):	124
Product width (mm):	223
Product depth (mm):	25
Product weight (g):	650
Product color:	White RAL9003, base grey RAL7001
Material:	ABS, PMMA
Flush mounting:	Yes, with a dedicated accessory
Wall mounting:	Yes, with a dedicated accessory
Desk base-mounted:	Yes, with a dedicated accessory



1209

2-WIRE VIDEO KIT POWER SUPPLY UNIT

33 VDC power supply unit with overload and short circuit protection devices. It has two separate continuous outputs: one to power the external unit and electric lock, and the other to power the monitor. Input voltage 110-240 VAC. Dimensions: 106x62x89mm (6 DIN modules).

MAIN FEATURES - 1209

Supply voltage (VAC):	110÷240
Input connector:	Terminal block
Applicable to DIN rail:	Yes
Number of DIN modules:	6
Max. current delivered (A):	1,2



6817

FLUSH-MOUNTED BOX FOR MAXI MONITOR

Flush-mounted box in black ABS. Dimensions: 212x115x50mm

MAIN FEATURES - 6817

Height (mm):	115
Width (mm):	212
Depth (mm):	50



8461X

QUADRA + MAXI SINGLE-FAMILY KIT, SIMPLEBUS SYSTEM

KIT PRODUCT



6820

S2 & VIP MAXI MONITOR WALL SUPPORT

Wall support for Maxi monitor in ABS UV resistant. White RAL 9003 colour. Dimensions (W x H x D): 216.4x117.5x14 mm.

MAIN FEATURES - 6820

Height (mm):	117,5
Width (mm):	216,4
Depth (mm):	14
Weight (g):	50



1216

SIMPLEBUS/KIT SYSTEM TERMINAL

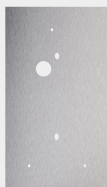
Line termination terminal. To be mounted at the end of the riser, according to the indications given in the technical documentation, to optimise distribution of the signals.



8461X

QUADRA + MAXI SINGLE-FAMILY KIT, SIMPLEBUS SYSTEM

ACCESSORIES



4791

Adapter plate for Quadra

Plate allowing installation of the Quadra external unit in 1- and 2-module flush-mounted boxes by Comelit, Bticino and Urmet. Dimensions 137x236 mm



4792

RAIN SHIELD FOR QUADRA ENTRANCE PANEL

Rain shield in painted aluminum for Quadra entrance panel, grey colour. Dimensions (W x H x D): 99 x 210 x 41 mm.



4793MB

BLACK FACEPLATE FOR QUADRA W/BUTTONS

Black faceplate for Quadra entrance panel with mechanical buttons



4793MC

CORTEN FACEPLATE FOR QUADRA W/BUTTONS

Corten color faceplate for Quadra entrance panel with mechanical buttons.



4793MA

ALUMINIUM FACEPLATE FOR QUADRA W/BUTTONS

Aluminium colour faceplate for Quadra entrance panel with mechanical buttons



1217

NAME TAG SHEETS FOR QUADRA ENTRANCE PANEL

The kit contains 10 sheets of adhesive labels for nameplates



8461X

QUADRA + MAXI SINGLE-FAMILY KIT, SIMPLEBUS SYSTEM

ACCESSORIES



1235A

NAMEPLATE LABEL PRINTING SOFTWARE

Dedicated software for the creation and printing of nameplate and information labels for Ikall, Vandalcom, Quadra and 316 Analog entrance panels. Requires use of adhesive labels art.1217, 1218, 1219 or art.1220. This software is available to download free of charge from the Comelit website



6817

FLUSH-MOUNTED BOX FOR MAXI MONITOR

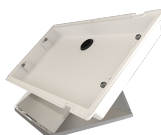
Flush-mounted box in black ABS. Dimensions: 212x115x50mm



6820

S2 & VIP MAXI MONITOR WALL SUPPORT

Wall support for Maxi monitor in ABS UV resistant. White RAL 9003 colour. Dimensions (W x H x D): 216.4x117.5x14 mm.



6812

DESK BASE FOR MAXI MONITOR

Desk base for desktop conversion of Maxi monitor. Dimensions: 105x75x110mm.



1209

2-WIRE VIDEO KIT POWER SUPPLY UNIT

33 VDC power supply unit with overload and short circuit protection devices. It has two separate continuous outputs: one to power the external unit and electric lock, and the other to power the monitor. Input voltage 110-240 VAC. Dimensions: 106x62x89mm (6 DIN modules).



1229A

ADDITIONAL RINGTONE ACCESSORY. S2

Wall-mounted accessory for additional ringtone for direct connection to 2-wire bus. Allows ringtone selection and adjustment of ringtone volume with privacy function, equipped with dip switches for user code programming, floor door call input terminals and call repeat. Fitted with distribution terminal art. 1214/2C. Dimensions: 125x95x24mm.



8461X

QUADRA + MAXI SINGLE-FAMILY KIT, SIMPLEBUS SYSTEM

ACCESSORIES



1256

ACCESSORY - SIMPLEBUS SYSTEM DIGITAL RELAY ACTUATOR

Intelligent Simplebus device for controlling a 12-24 V relay contact. If used in mixed audio/video systems, the actuator relay needs a video filter to be purchased separately. Power supply: 12V AC or 20V DC. Dimensions: 66X85X35 (4 DIN modules).



1404

DIGITAL SWITCHING DEVICE. 2-WIRE SYSTEM

Audio/video switching module for Simplebus 2 2-wire digital systems. To be used in systems with more than one entrance. Power supply from bus line. Dimensions: 60x85x35 mm (4 DIN modules).



1405

DIGITAL EXCHANGE 2 QUADRA INPUTS. S2

Audio/video switching module for audio/video kit systems. For use in systems with a maximum of 2 entrances with Quadra series external unit. Power supply from bus line. Dimensions: 35x90x58mm (2 DIN modules).



1409

ACCESSORY FOR REMOTE COLOUR CAMERAS, 2-WIRE SYSTEM

Remote camera module for Simplebus 2 2-wire digital systems. Allows management of up to 3 colour cameras in cyclical sequence from door entry monitors using a dedicated button. 12 Vac or 20 Vdc power supply. Dimensions: 60x85x35 mm (4 DIN modules).